

PC-based visualisation

# CX-Lite

**See your machine or production data easily in Microsoft excel.**

Display machine or process data in Microsoft Excel in minutes not hours.

**Key features**

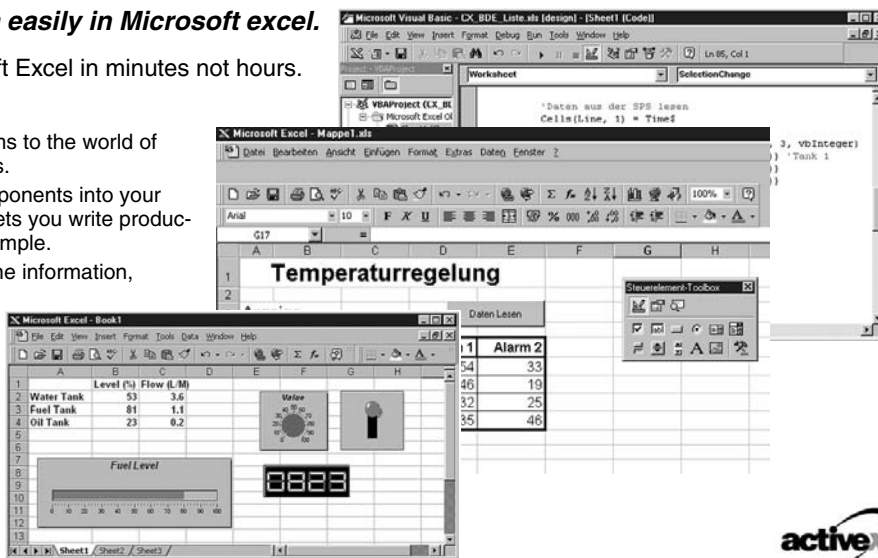
CX-Server Lite connects the OMRON PLC systems to the world of Microsoft Office, Microsoft Programming languages.

By simply importing the CX-Server ActiveX® components into your application you can create a link to the PLC that lets you write production parameters and read production data, for example.

These products allow easy visualisation of machine information, through standard ready-to-use (graphical) components to create production and machine static reports or simple control applications.

No specialised knowledge of PLC systems or networks is needed to use these products. Any VBA or Visual Basic user can use CX-Server Lite easily and successfully.

The products represent a substantial time saving compared with conventional programming.



**General Data**

	Specification
<b>Supported PLC systems</b>	CS1, CJ1, C20, CXxK, CXxH, CXxp, SRM1, CPM, CQM1, CQM1H, C200H/-HS/-HX/-HG/-HE, C1000H, C2000H, CV/CVM1
<b>Communication</b>	<ul style="list-style-type: none"> <li>Peripheral port and Host Link port via COMx (RS-232C)</li> <li>Controller Link, SYSMAC NET, SYSMAC Link</li> <li>Ethernet</li> <li>Modem</li> </ul>
<b>Supported Software</b>	<ul style="list-style-type: none"> <li>MS Excel 97 and later</li> <li>MS Visual Basic 5 and later</li> <li>MS Visual C++ 6.0</li> </ul>

**Product Overview**

	Description	Model code
<b>Program</b>	Microsoft Excel interface to serial connection only single application	CX-LITE-EVx.xx-S
	Microsoft Excel interface to serial connection 3 applications	CX-LITE-E03Vx.xx-S
	Microsoft Excel interface to serial connection 10 application	CX-LITE-E10Vx.xx-S
	Microsoft Excel interface to serial+ network connection single application	CX-LITE-EVx.xx-N
	Microsoft Excel interface to serial + network connection 3 applications	CX-LITE-E03Vx.xx-N
	Microsoft Excel interface to serial + network connection 10 application	CX-LITE-E10Vx.xx-N

**Functions**

<b>Program integration</b>	<ul style="list-style-type: none"> <li>Integration in VBA and Visual Basic via ActiveX® components</li> <li>Supports the use of ActiveX® components of other suppliers</li> </ul>
<b>Application</b>	Application-based display of PLC and OPC Server data with the features of MS Office products as well as VBA and Visual Basic
<b>OPC functions</b>	<ul style="list-style-type: none"> <li>Synchronous or Asynchronous communication</li> <li>Reading from cache or device</li> <li>Subscription update rates starting from 100 milliseconds</li> </ul>
<b>Standard controls</b>	<ul style="list-style-type: none"> <li>7 Segment- and Display control to display data in multiple formats</li> <li>Toggle button, Rotary Knob, Thumbwheel control and LED Indicator to write a value with a single click and to visualize the value at the same time</li> <li>Linear- and Rotational Gauge that can display data in a graphical way</li> <li>Data Logging, Timer and Linker controls to log data, trigger actions and connect third party ActiveX® controls</li> </ul>