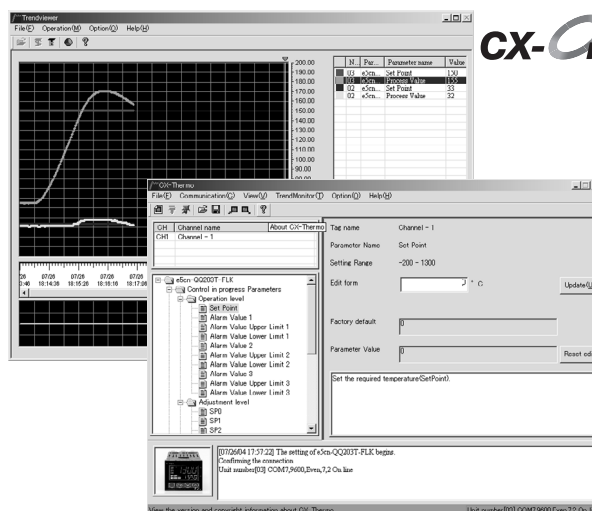


CX-Thermo Support Software Ver. 3.0 EST2-2C-MV3

Monitoring/Setting Support Software for E5CN-, E5EN-, E5AN, E5ZN-, E5□R, and EJ1-series Temperature Controllers Enabling Faster Parameter Setup, Device Adjustment, and Maintenance

- Enables creating, editing, and batch-downloading parameters from a personal computer, reducing the work required to set parameters.
- Supports Online Monitoring:
Monitor data for up to 31 Temperature Controllers at the same time. Up to 64 EJ1 Temperature Controllers can be connected. (The Temperature Controllers must be from the same series.)
- Supports parameter masks for hiding unused parameters (E5□N, E5□R and E5ZN).
- Starting CX-Programmer at the same time and using in combination enables sharing of the folders used by CX-Programmer.
- Searches automatically for models by unit number only and is equipped with an autopilot function for connecting to the trend monitor.



CX-One

NEW

Ordering Information

List of Models

Name	Model
CX-Thermo Support Software	EST2-2C-MV3

Note: The old models of E5□N Temperature Controller are not supported.

Specifications

Basic functions	Creating, changing, and saving parameters Monitor function Parameter mask (unused parameters are not displayed) function (E5□N, E5□R and E5ZN) Parameter mask settings can be written (personal computer to E5□N) only. Parameter mask settings cannot be read (E5□N to personal computer).	
Compatible devices	Temperature Controllers E5□N, EJ1 (Models without communications functions can also be connected if the E58-CIFQ1 Cable is used, although 1:N connections are not possible). E5ZN, E5AR and E5ER (except E5AR and E5ER models for DeviceNet communications)	
Personal computer system requirements	CPU	300 MHz min.
	OS	Windows 2000 or XP (Japanese or English versions)
	Memory	128 MB min.
	Harddisk	650 MB min. available space
	CD-ROM	One CD-ROM drive
Communications ports	Monitor	SVGA (800 × 600). Recommended: XGA (1024 × 768), high color (16 bits) min.
	Communications ports	<ul style="list-style-type: none"> • RS-232C port, COM1 to COM8 • USB port can be used if the E58-CIFQ1 is used (E5□N and EJ1 only). • USB port can be used if the K3SC is used. (Connection to E5□N, E5ZN, or E5□R is supported only for models with communications.)

Note: "E5□N" indicates the upgraded versions of the E5CN, E5AN, and E5EN.

The ThermoMini Parameter Copying Software is provided free-of-charge.

Compatible Temperature Controllers:

- E5CN (new models) only (not supported for EJ1, E5EN, or E5AN)

Functions:

- Uploading all parameters from the E5CN to the personal computer
- Downloading all parameters from the personal computer to the E5CN
- Saving uploaded data to the personal computer and outputting data as CSV files

Note: Changing parameter settings and monitoring is not supported.

Contact your OMRON representative for details.

Note: The product names in this catalog are trademarks or registered trademarks of the respective companies.

- The application examples provided in this catalog are for reference only. Check functions and safety of the equipment before use.
- Never use the products for any application requiring special safety requirements, such as nuclear energy control systems, railroad systems, aviation systems, medical equipment, amusement machines, vehicles, safety equipment, or other application involving serious risk to life or property, without ensuring that the system as a whole has been designed to address the risks, and that the OMRON products are properly rated and installed for the intended use within the overall equipment or system.

ALL DIMENSIONS SHOWN ARE IN MILLIMETERS.

To convert millimeters into inches, multiply by 0.03937. To convert grams into ounces, multiply by 0.03527.